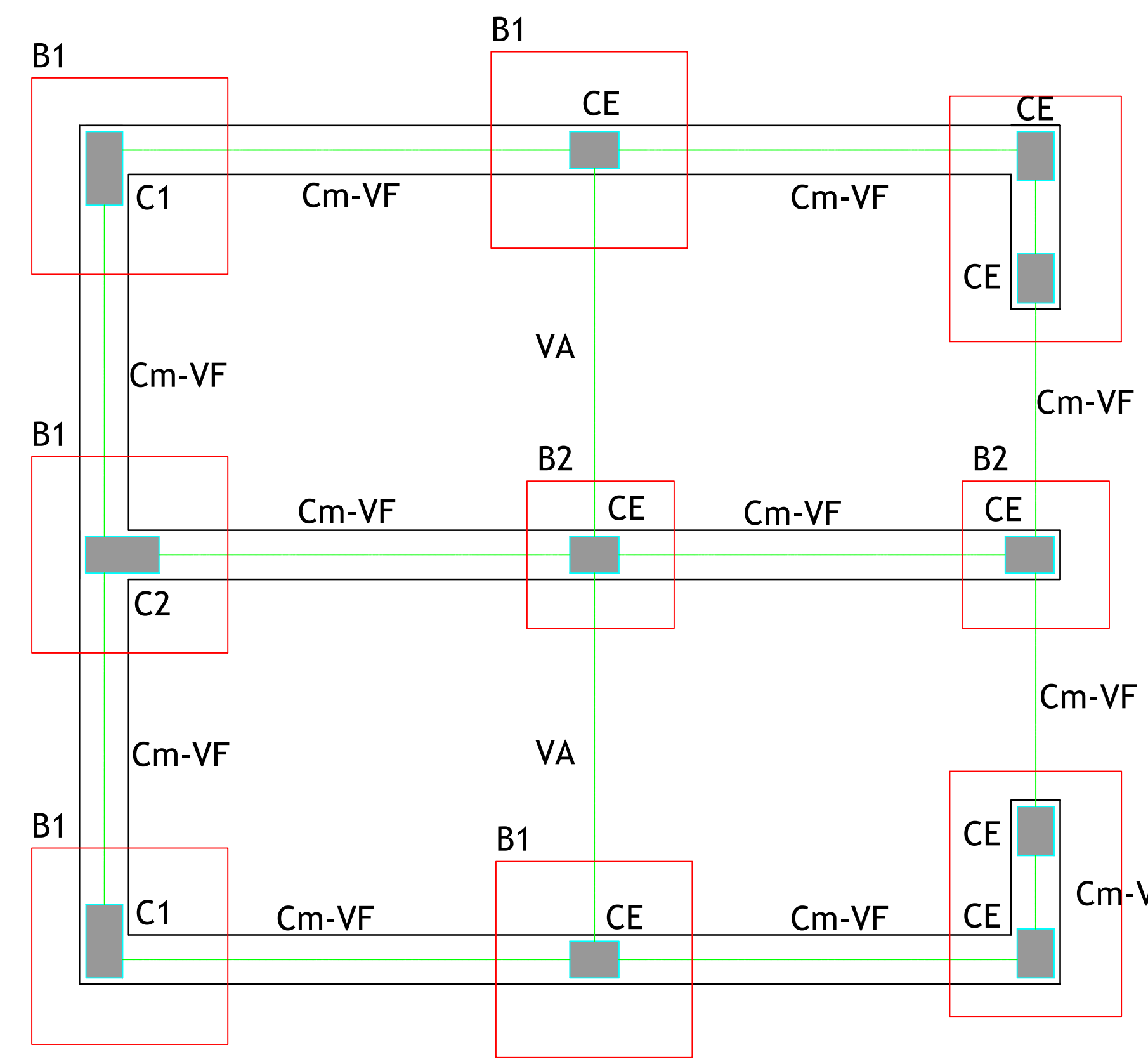
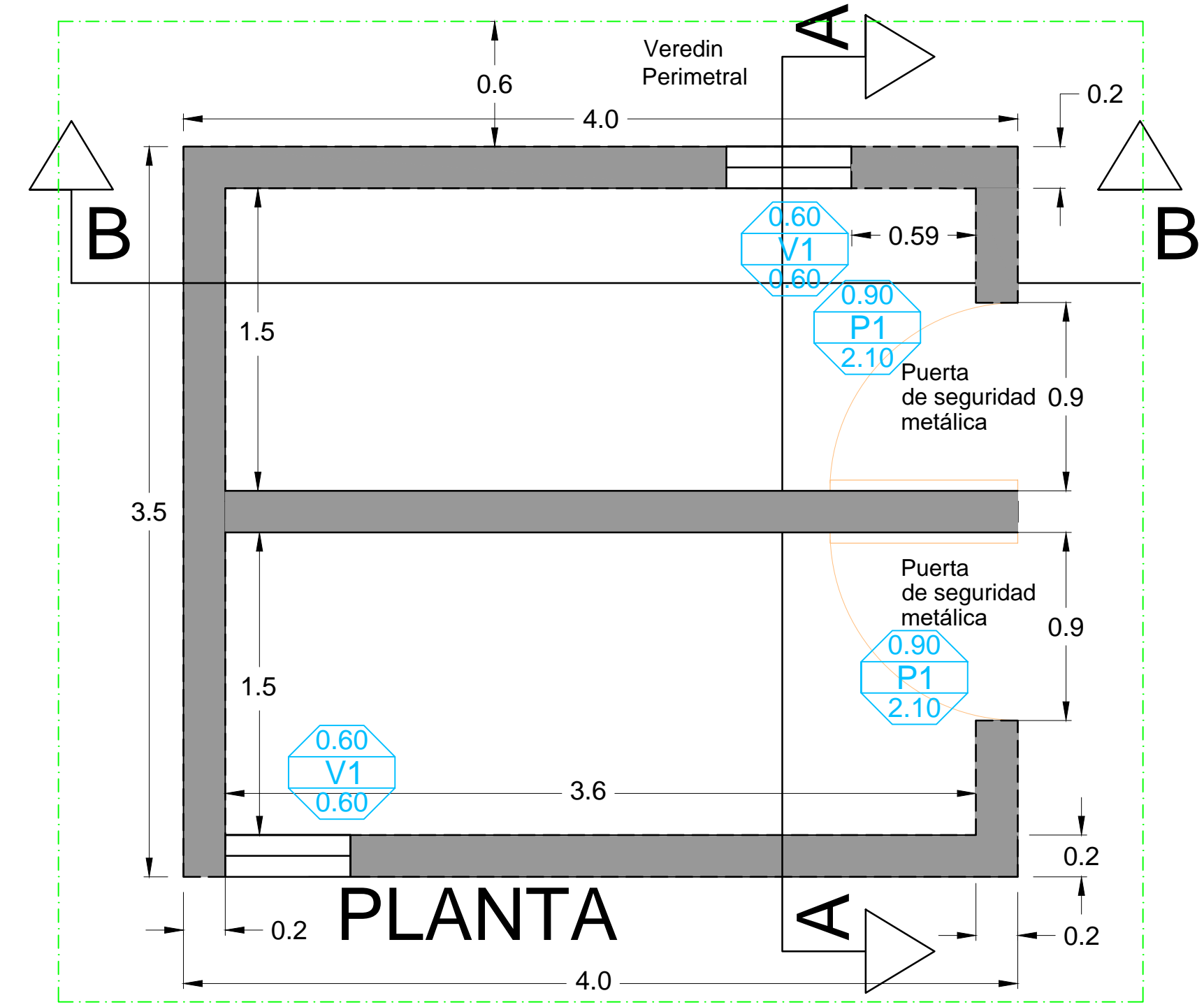
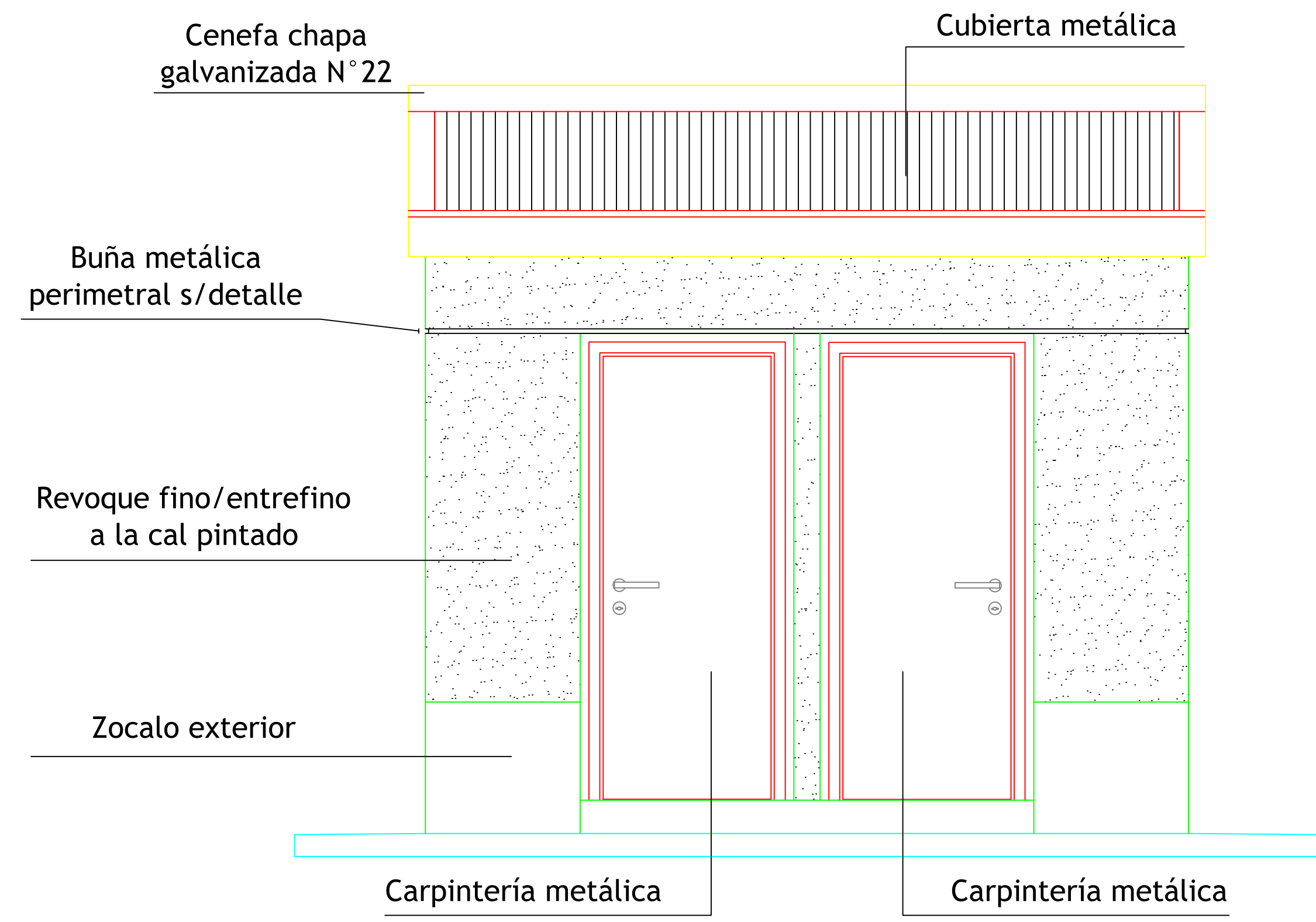


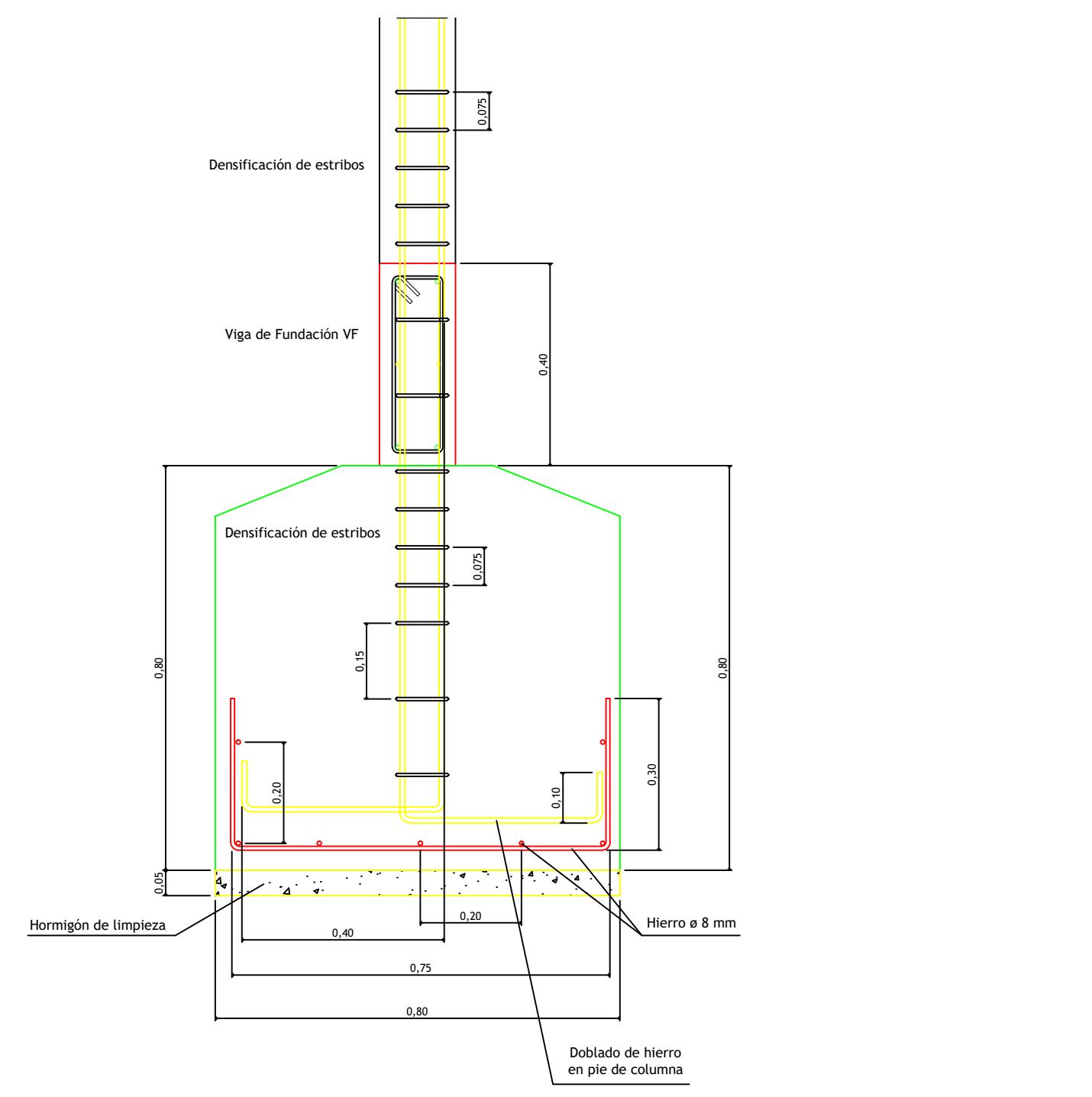
ARQUITECTURA Y ESTRUCTURAS DE SALA DE EQUIPOS

FACHADA PRINCIPAL

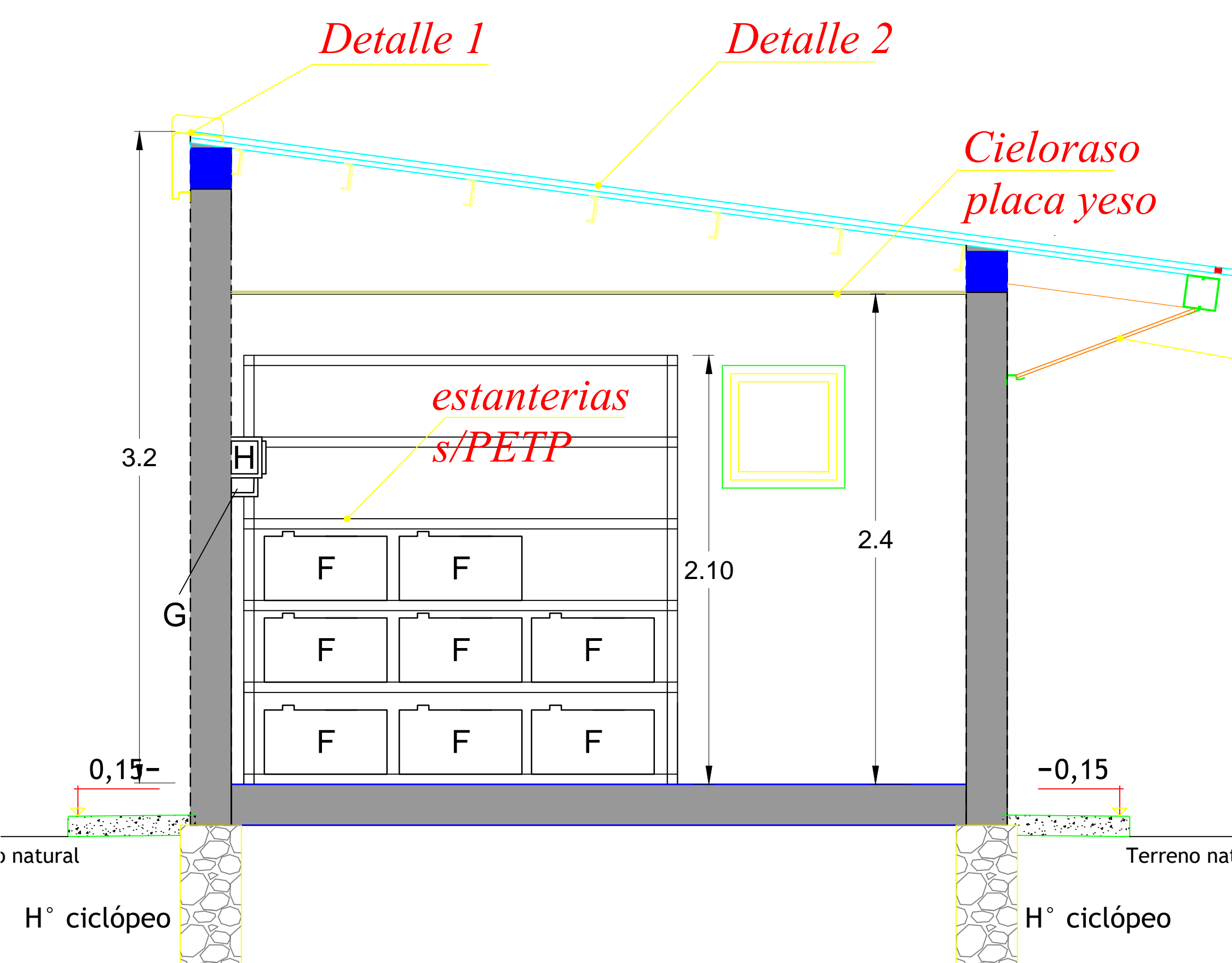


FUNDACIONES (TÍPICAS)

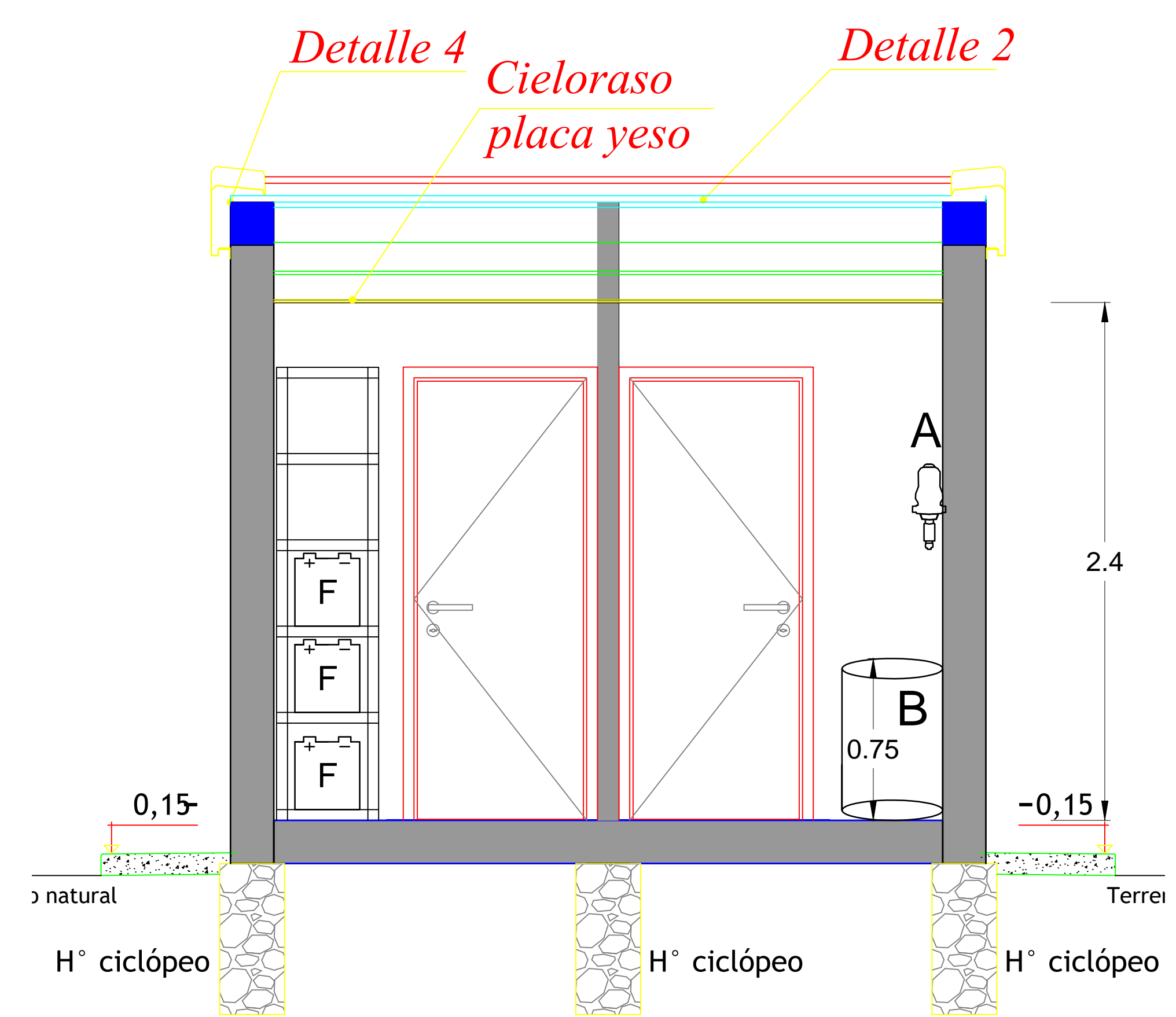
- a) Tipo: BASES AISLADAS PROFUNDAS
- b) Profundidad de fundación: -1,00 m (MEJORADO) del ±0.00 nivel del piso de pavimentos terminados interiores .
- c) TENSION ADMISIBLE DEL SUELO A CARGAS VERTICALES
 $\sigma_{adm} = 1,5 \text{ Kg/cm}^2$ en servicio y $\sigma_{adm} = 3,0 \text{ Kg/cm}^2$ con sismo



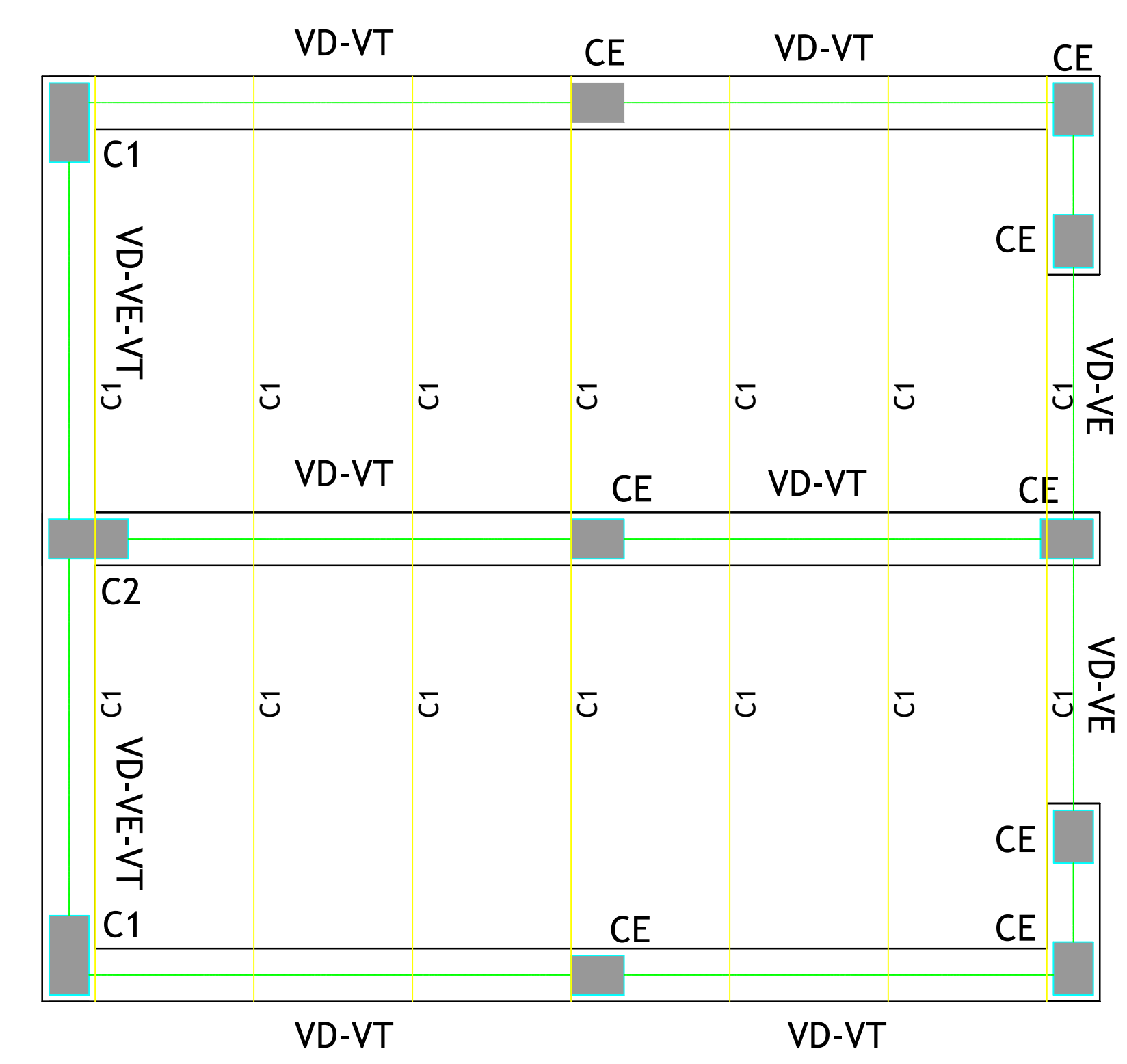
BASE	DIMENSIONES			ARMADURAS			OBSERV.	
	ax	ay	h	ox	Sep. oy	Sep.		
B1	80	80	70	8	20	8	20	Centrada
B2	60	60	70	8	20	8	20	Centrada
B3	70	100	70	8	20	8	20	Corrida



CORTE B-B



CORTE A-A



FORMA DE COLOCAR REFUERZOS EN CORREAS SIMPLES C1

Correa C1

Perfil "C" 120-50-15-2,0
 $J_x = 105,8 \text{ cm}^4$
 $W_x = 17,6 \text{ cm}^3$
 $g = 3,72 \text{ kg/m}$
 $F = 4,74 \text{ cm}^2$

